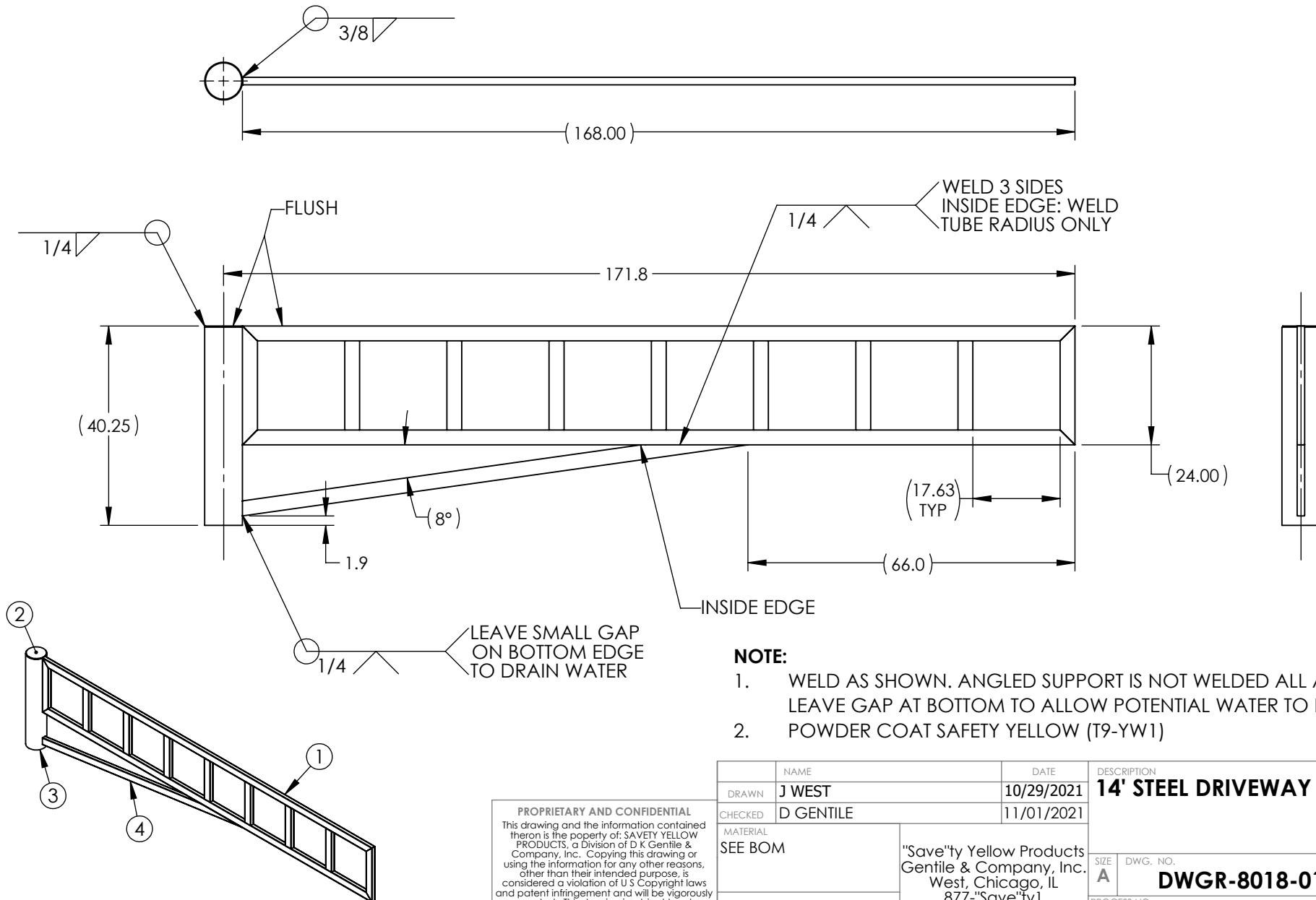


| ITEM NO. | PART NUMBER | Revision | DESCRIPTION | QTY | MATERIAL |
|----------|---------------|----------|---------------------------------|-----|--|
| 1 | DWGR-5018-014 | A | FRAME ASSEMBLY - 14' GATE | 1 | SEE BOM |
| 2 | DWGR-3018-001 | B | 7.313" DIA X 0.25" CAP | 1 | .250 STEEL SHEET |
| 3 | DWGR-3018-040 | B | PIPE, DRIVEWAY GATE | 1 | 6.875 ID X .375 WALL STEEL PIPE |
| 4 | DWGR-3018-214 | A | ANGLED FRAME SUPPORT - 14' GATE | 1 | 3.00 X 1.50 X .075 WALL RECTANGULAR STEEL TUBING |

TOLERANCES:
 UNLESS OTHERWISE SPECIFIED
 X.X = $\pm 1/8$
 X.XX = $\pm 1/16$
 X.XXX = $\pm 1/32$
 ANGLES = $\pm 5^\circ$



NOTE:

- WELD AS SHOWN. ANGLED SUPPORT IS NOT WELDED ALL AROUND. LEAVE GAP AT BOTTOM TO ALLOW POTENTIAL WATER TO DRAIN.
- POWDER COAT SAFETY YELLOW (T9-YW1)

PROPRIETARY AND CONFIDENTIAL
 This drawing and the information contained thereon is the property of: SAFETY YELLOW PRODUCTS, a Division of D K Gentile & Company, Inc. Copying this drawing or using the information for any other reasons, other than their intended purpose, is considered a violation of U.S. Copyright laws and patent infringement and will be vigorously prosecuted. This drawing is subject to return upon demand.

| | | | | | | |
|----------------------|-----------|---|----------------------------------|---|------------------|--|
| | NAME | | DATE | DESCRIPTION 14' STEEL DRIVEWAY GATE | | |
| DRAWN | J WEST | | 10/29/2021 | | | |
| CHECKED | D GENTILE | | 11/01/2021 | | | |
| MATERIAL SEE BOM | | "Save"ty Yellow Products Gentile & Company, Inc. West, Chicago, IL 877-"Save"ty1 | | | | |
| DO NOT SCALE DRAWING | | | | | | |
| | | | | | | |
| | | SIZE A | DWG. NO. DWGR-8018-016 | | REV. C | |
| | | PROCESS NO. | | FINISH PRING | | |
| | | | | SHEET 1 OF 1 | | |