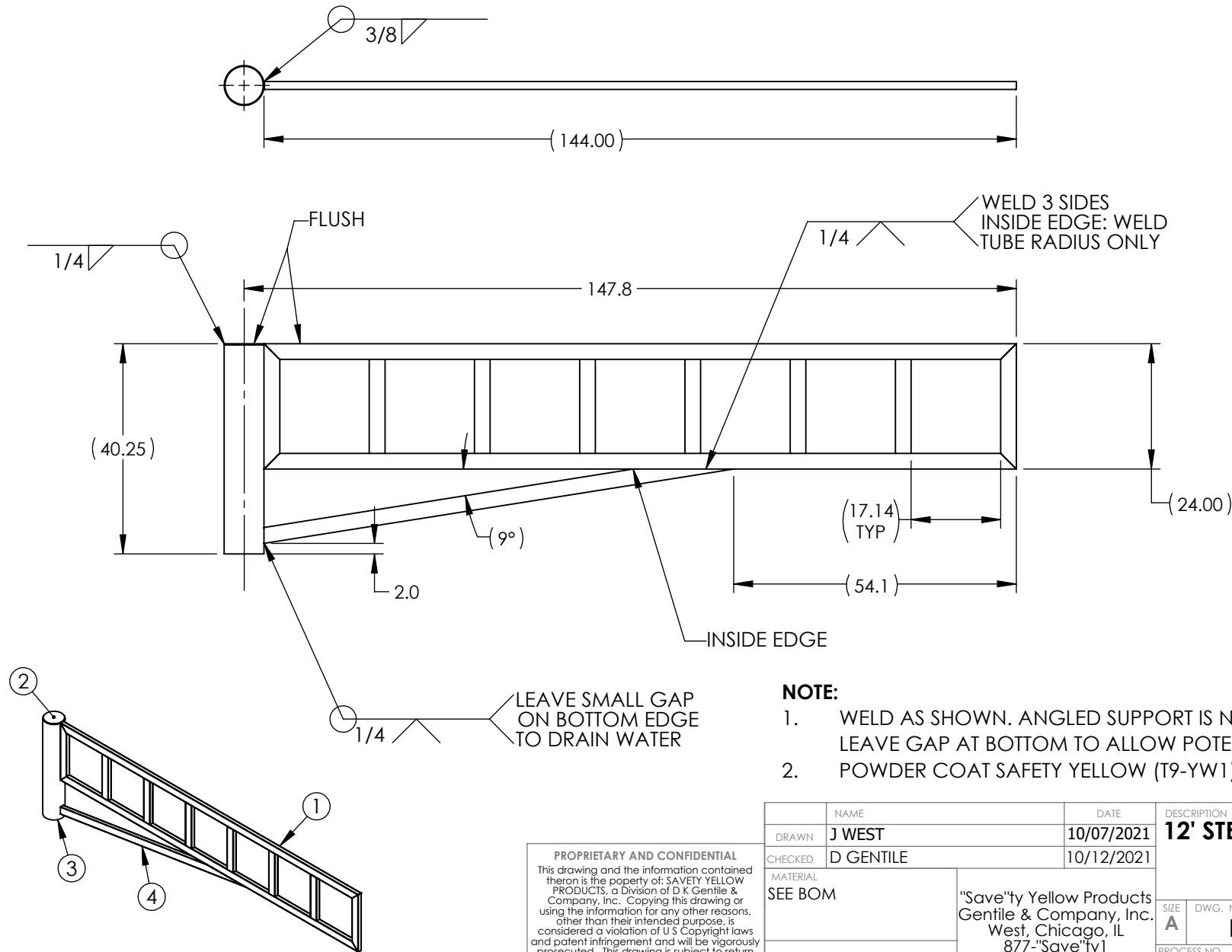


ITEM NO.	PART NUMBER	Revision	DESCRIPTION	QTY	MATERIAL
1	DWGR-5018-012	A	FRAME ASSEMBLY - 12' GATE	1	SEE BOM
2	DWGR-3018-001	B	7.313" DIA X 0.25" CAP	1	.250 STEEL SHEET
3	DWGR-3018-040	B	PIPE, DRIVEWAY GATE	1	6.875 ID X .375 WALL STEEL PIPE
4	DWGR-3018-212	A	ANGLED FRAME SUPPORT - 12' GATE	1	3.00 X 1.50 X .075 WALL RECTANGULAR STEEL TUBING

TOLERANCES:
 UNLESS OTHERWISE SPECIFIED
 X.X = $\pm 1/8$
 X.XX = $\pm 1/16$
 X.XXX = $\pm 1/32$
 ANGLES = $\pm 5^\circ$



NOTE:

1. WELD AS SHOWN. ANGLED SUPPORT IS NOT WELDED ALL AROUND. LEAVE GAP AT BOTTOM TO ALLOW POTENTIAL WATER TO DRAIN.
2. POWDER COAT SAFETY YELLOW (T9-YW1)

PROPRIETARY AND CONFIDENTIAL
 This drawing and the information contained thereon is the property of: SAVEITY YELLOW PRODUCTS, a Division of D K Gentile & Company, Inc. Copying this drawing or using the information for any other reasons, other than their intended purpose, is considered a violation of U S Copyright laws and patent infringement and will be vigorously prosecuted. This drawing is subject to return upon demand.

	NAME		DATE	DESCRIPTION		
DRAWN	J WEST		10/07/2021	12' STEEL DRIVEWAY GATE		
CHECKED	D GENTILE		10/12/2021			
MATERIAL		"Save"ty Yellow Products Gentile & Company, Inc. West, Chicago, IL 877-"Save"ty1		SIZE	DWG. NO.	REV.
SEE BOM				A	DWGR-8018-012	C
DO NOT SCALE DRAWING				PROCESS NO.		FINISH PRING
						SHEET 1 OF 1