



LED FLOODLIGHT

PID: SL923FLL



APPLICATIONS

ROADWAYS / HIGHWAYS
PARKING LOTS
OUTDOOR LIGHTING

SPECIFICATIONS

- **Construction:** ADC12 Aluminum heat sink; LUMILEDS LED Chips; Outdoor powder coating
- **Operating Temperature:** -40°F to 104°F (-40°C to 40°C)
- **Energy Data:** Driver 100-277V SU or 277-480V HV; THD <20%; Power factor >.90; Surge protection 6KVA
- **Mounting:** Interchangeable mount options
- **Certifications:** UL Certified, DLC Premium, FCC, IP65, LM79
- **Additional:** Photo sensor available; Type 2, 3 & 4 lens options; Available in white, silver or black
- **Rated Life:** 50,000 hours
- **Warranty:** 5 years

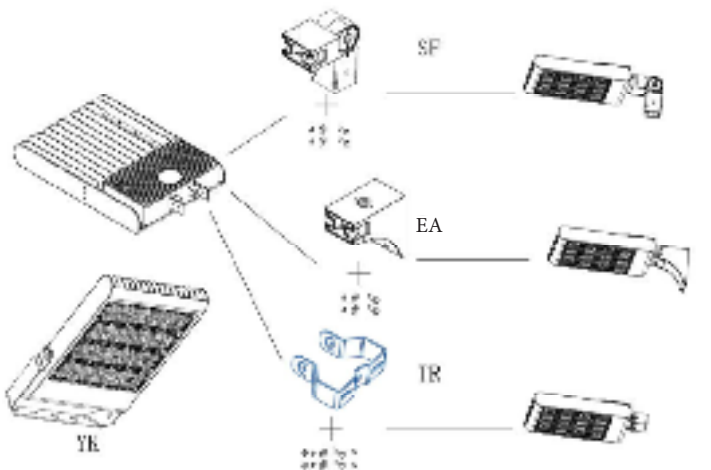
PRODUCT DETAILS

Watts	Lens Per Unit	Input	Kelvin ¹	Lumens ^{1,2}	Amps	Dimming	Beam Angle	CRI
100W	2	100-277V	40K, 50K	13,500	1.5	0-10V	90°x120°	> 70
		277-480V			0.55			
150W		100-277V		20,680	1.8			
		277-480V		0.88				
230W	3	100-277V		31,312	2.5			
		277-480V			1.4			
300W	4	100-277V		40,718	3.5			
		277-480V			1.8			

DIMENSIONS

Watts	Length	Width	Height
100W	11"	12.6"	3.4"
150W			
230W	14.2"		
300W	18.5"		

MOUNTING



MOUNTING OPTIONS

YOKE



TRUNNION



EXTRUDED ARM



SLIPFITTER



1. CCT range complies with ANSI C78.377-2008
 2. Rated average life based on engineering testing and probability analysis
 3. Lifetime test consistent with IESNA LM80 lumen maintenance procedure

ACCESSORIES



Motion Sensor



Program Remote



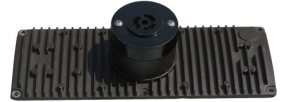
Shorting Cap



Photocell SU



Photocell HV



Shorting Cap + Back Cover



Lens Cover
Type 2, 3 & 4 Available



Trunnion Mount



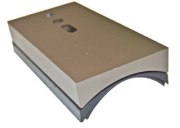
Extruded Arm Mount



Slipfitter Mount



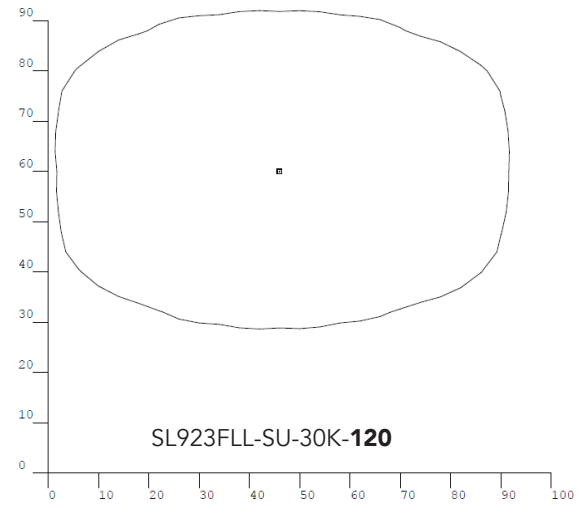
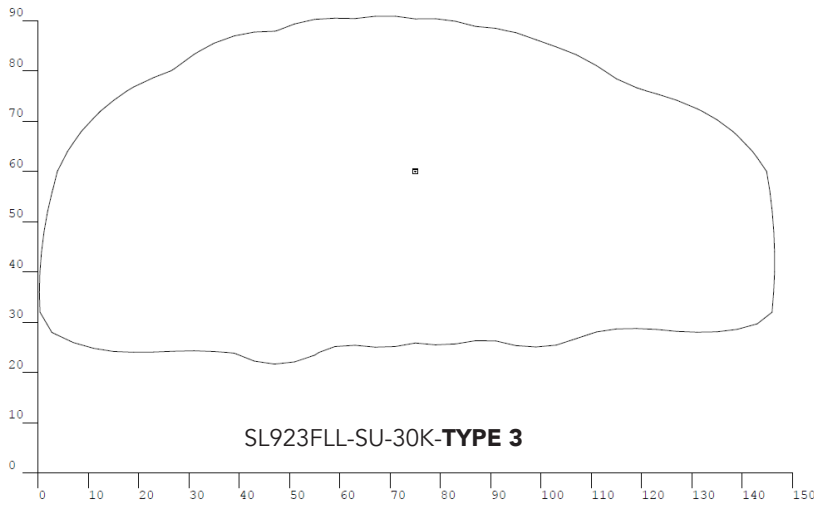
TM to SF Adapter



Extruded Arm Adapter
for Round Pole

NO LONGER AVAILABLE

PHOTOMETRIC DATA



Scale: 1 inch= 10 Ft.

NOTES:

- 1.) MOUNTING HEIGHT=20FT
- 2.) TILT=0
- 3.) LIGHT LOSS FACTOR=1.0
- 4.) ISO CURVE LINES ARE AT 0.5FC
- 5.) ISO CURVE LINES ARE AT GRADE

Foot-candle readings do not include shadowing effects caused by obstructions on-site such as buildings, trees, etc. Normal tolerances of voltage, temperature, lamp output, and ballast will affect results. Conformance to any and all facility, local, state, or national codes and requirements is the responsibility of the owner and/or the owner's representative.

ORDER EXAMPLE:

SL923FLL	100W	SU	50K	90x120	D	O	SC
Product ID	Wattage:	SU=100-277V HV= 277-480V	CCT: 40K=4000K 50K=5000K	Beam Angle: 90 x 120	D=Dimming	YM = Yoke Mount O = No Mount	SC= Shorting cap back Blank = None
	100W 150W 230W 300W						

The Straits Lighting Company is constantly developing and improving its products. For this reason, all product descriptions in this brochure are intended as a general guide, and we may change specifications from time to time in the interest of product development, without prior notification or public announcement. All descriptions in this publication present only general particulars of the goods to which they refer and shall not form part of any contract. Data in this guide has been obtained in controlled experimental conditions. However, The Straits Lighting Company cannot accept any liability arising from the reliance on such data to the extent permitted.