

Indoor Convex Detection Mirrors



Convex mirrors should be mounted at the end of alternating aisles to reflect the view of the traffic moving from the neighboring isles.

Small convexes can be used in offices to view hallways or reception areas for visitors or moving pedestrian traffic.

- **20% Brighter Than Glass Mirrors**
- **Available in Polycarbonate**
- **Mounting Hardware Included**
- **Less Distortion**
- **Economical**

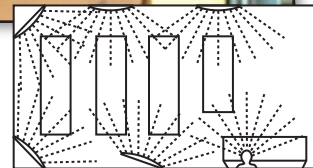
New for High Traffic Areas

Indoor Wide View Convex



Indoor Convex Detection Mirrors are designed to prevent intersection accidents in an industrial application.

Convex mirrors can be positioned to reflect a hidden area to a forklift operator. These mirrors can also be directed to allow equipment operators to view co-workers approaching from behind to reduce accidents.



■ Easy to Install

Mounted Easily with the Provided Hardware

■ Security & Theft Prevention

Retail Convex Mirror Usage Benefits:
Prevention of Shoplifting & Security from Entry Doors with Poor Viewing Access

■ Wide Angle Vision

Permits You to See Around Corners, Over Center Aisles & Blind Corners

■ Recognized O.S.H.A. Compliance

Assures That Evaluation Has Been Placed on the Safety of Busy Intersections

MFG#	Description	MFG#	Description
SCVI-12Z	Acrylic Convex Mirror, 12"	SCVI-36T	Acrylic Convex Mirror, 36"
SCVI-18Z	Acrylic Convex Mirror, 18"	DCVI-48T	Acrylic Convex Mirror, 48"
SCVI-26T	Acrylic Convex Mirror, 26"	TCVI-32T-7DP	Wide View Convex, 32"
SCVI-30T	Acrylic Convex Mirror, 30"		
SB - Add Suffix to Item No. for Yellow/Black Safety Border			
PC - Add Suffix to Item No. for Polycarbonate			



Made in U.S.A.



Se-Kure Domes & Mirrors, Inc.

Visit us on the Web: www.domesandmirrors.com
e-mail: info@domesandmirrors.com

1139 Haines Boulevard • Stapleton Industrial Park • Sturgis, MI 49091 • 1-(800) 253-2064 • (269) 651-9351 • Fax (269) 651-1467