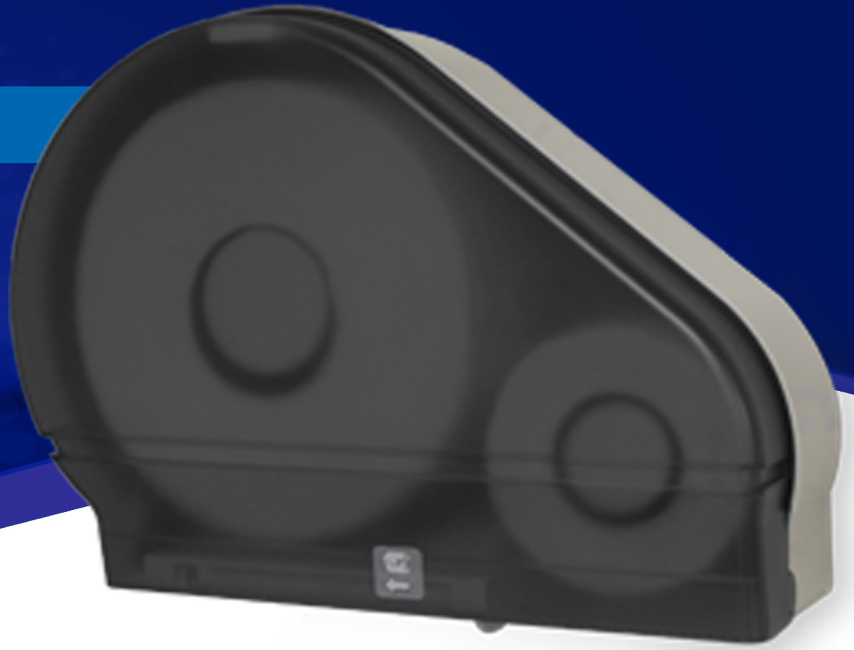


RD0024

Single 9" Jumbo Tissue Dispenser with Stub Roll



FEATURES



- Small, compact design
- Sliding panel ensures the use of one roll at a time
- Double-latch lock prevents waste
- Translucent cover allows for easy view of paper
- 2-1/4" core, also includes a 3-3/8" adaptor
- ADA Compliant

AVAILABLE COLORS

Dark Translucent Cover with a Beige Back



Dark Translucent Cover with a Black Back

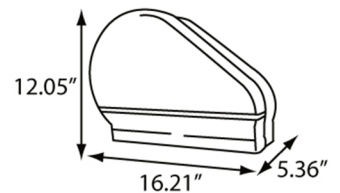


White Translucent Cover with a Beige Back



SPECIFICATIONS

Model #	RD0024-01F (Dark Translucent) RD0024-02F (Black Translucent) RD0024-03F (White Translucent)		
Dimensions	16.21" W x 12.05" H x 5.36" D		
Weight	2.60 lbs	Case Pack	4 per case - 3.08' ³
Capacity	9" Roll & Stub Roll (2¼" core w/ 3¾" Adaptor)	Key Type	1



Ph: 800.558.8678
 Ph: 920.884.8698
 Fax: 920.884.8699
 info@palmerfixture.com



Palmer Fixture
 P.O. Box 10887
 Green Bay, WI 54307
 www.palmerfixture.com