

PROJECT:	
CATALOG #	
TYPE:	DATE:

## LED NSF HIGH BAY

### DESCRIPTION

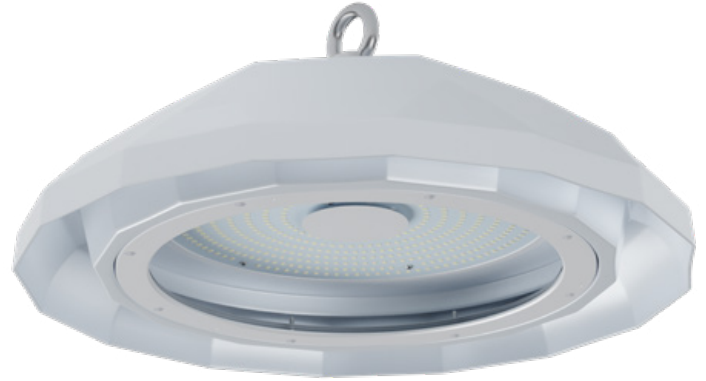
Certain environments require a heightened level of sanitation. These areas can often include grease, oil, smoke, food particles or dust – all contributing to factors that could lead to bacteria growth and contamination. To meet strict sanitary requirements, an area may be subject to daily wash downs and special cleaning schedules.

The LED NSF High Bay is the perfect solution to demanding environments. As an NSF (National Sanitation Foundation) certified product, with an IP69K rating, this luminaire is dust tight and resistant to steam-jet cleaning. It's smooth, stylish outer shell eliminates exposed hardware and crevices where moisture and bacteria can accumulate to cause contamination issues. It is also corrosion resistant – powder coated with a stainless steel mounting ring, making it beneficial in areas where salt or chemicals are present.

As a direct replacement for HID, metal halide or fluorescent bulbs, this LED high bay represents up to a 70% reduction in energy costs. With a 50,000 hour rated life, backed by a 5 year warranty, you're guaranteed years of excellent LED light for visual acuity, low maintenance and dramatic energy savings.

### FEATURES

- NSF rated
- IP69K
- Non-toxic corrosion resistant aluminum body
- Polycarbonate shatterproof lens
- Smooth, easy to clean body
- No exposed hardware
- Wet location rated
- 6' cord
- 140 LPW
- Safety Cable pre-installed
- 0-10V dimming
- 50,000 hour rated life
- 5 year warranty
- DLC 5.1 Premium



### APPLICATIONS

- Food & beverage processing
- Farming & agricultural facilities
- Commercial kitchens
- Power plants
- Marinas
- Manufacturing facilities
- Cold / freezer spaces

### MOUNTING

- Suspended

### CERTIFICATIONS



## SPECIFICATIONS

**Life (@L70):** 50,000 hours

**Warranty:** 5 years

### PERFORMANCE

**Operating temp:** -40°F to 113°F (-40°C to 45°C)

**Efficacy (LPW):** 140 LPW

**CRI:** 80

### ELECTRICAL

**Input voltage:** 120-277V

**Input frequency:** 50/60Hz

**PF:** ≥0.9

**THD:** N/A

**Surge protection:** 4KV

**Dimming:** 0-10V

**Minimum dimming:** N/A

**Aux. Power Tap:** N/A

**Driver CL:** N/A

**Whip/Cord:** SJTW/SJOW, 300V, 18AWG, 105°C

**Sensor:** The HBF food grade, wash-down fixture does not have capability of onboard sensors. The workaround solution is to install 3rd party wet rated, wash down sensors, mounted remotely on liquid tight J-Box mountings controlling 120-277V lighting circuits in zonal fashion.

### OPTICAL

**Beam:** 115°

**Lens:** Polycarbonate

**UGR:** N/A

### PHYSICAL

**Finish:** Powder Coat

**Color:** White

**Housing:** Aluminum Alloy

### INDUSTRY STANDARDS/RATINGS

**IP:** 69

**IK:** N/A

**Location:** Wet

**IC:** N/A

**UL:** Yes

**ETL:** No

**NSF:** Splash Zone 2 Rated

**FCC:** Yes

**RoHS:** Yes

**DLC:** 5.1 Premium

## DIMENSIONS / WEIGHT

ORDER#	LENGTH	HEIGHT	WEIGHT
HBF10040	17.08"	7.56"	15.43 lbs
HBF10050	17.08"	7.56"	15.43 lbs
HBF15040	17.08"	7.56"	15.43 lbs
HBF15050	17.08"	7.56"	15.43 lbs



## MOUNTING

**Standard:** Ring mounting  
Suspended mounting  
12MM Rigid with stainless steel all-thread

## ACCESSORIES

Emergency Battery Backup

## ORDERING INFORMATION

ORDERING CODE	DESCRIPTION	WATTS	VOLTS	CCT (K)	LUMENS
HBF10040	100W LED NSF High Bay in 4000K	100	120-277	4000	14,000
HBF10050	100W LED NSF High Bay in 5000K	100	120-277	5000	14,000
HBF15040	150W LED NSF High Bay in 4000K	150	120-277	4000	21,000
HBF15050	150W LED NSF High Bay in 5000K	150	120-277	5000	21,000

## ACCESSORIES

TR01



EB20



EBAM



ORDERING CODE	DESCRIPTION	USAGE
TR01	Test Remote Control	Used for testing and demonstrating the functionality of EB20 emergency battery backup integrated products. <ul style="list-style-type: none"> <li>• Only one remote required per area, building or site as necessary.</li> </ul>
EB20	20W Emergency Battery Backup	Supplies 90 minutes of battery backup to the fixture in times of a power outage. <ul style="list-style-type: none"> <li>• This unit is compatible with fixtures using &gt;81W and &lt;199W.</li> <li>• This unit is not currently compatible with sensor usage.</li> <li>• The unit must be ordered with indicator module EBAM , and Test Remote TR01.</li> </ul>
EBAM	Adhesive-Mounted Indicator Module	This Adhesive-Mounted Indicator Module (EBAM) must be used with one of Litetronics' emergency battery backup products (EB10, EB10N or EB20) to provide a visual confirmation of the operational status of the EBB unit. This module is typically used in open ceiling or drywall ceiling applications where the module is applied to the side of the fixture, mounting kit, or a nearby structural element.

*\*Note: Emergency battery backup and indicator module need to be mounted in a wet location.*

Listing of suggested chemicals and sanitizers to help protect against corrosion.

CHEMICAL	DESCRIPTION
Hypochlorites	Highly effective in killing microbes and destroy microbe DNA.
Chlorine Dioxide	Highly effective against bacteria, viruses and fungi as it reacts with proteins and fatty acids to break down the organisms structurally.
Iodophors	Effective as both a sanitizer and a disinfectant, the real advantage that Iodophors have over other chemicals is its sustained release effect. It means that microbes are killed steadily over an extended period of time, ensuring a surface stays clean and sanitized for longer.
Peroxyacetic Acid (PAA)	Effective against most microorganisms, PAA-based sanitizers are environmentally friendly and less corrosive to equipment.
Quaternary Ammonium Compounds (QACs or Quats)	Usually odorless, non-staining, non-corrosive and relatively non-toxic