

LED LIGHT PANEL

SELECTABLE OUTPUT SERIES

DESCRIPTION

Combining top-of-the-line efficiency, versatility, and a stylish, modern design, our line of LED Light Panels offers ideal solutions for a wide range of interior applications.

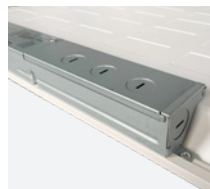
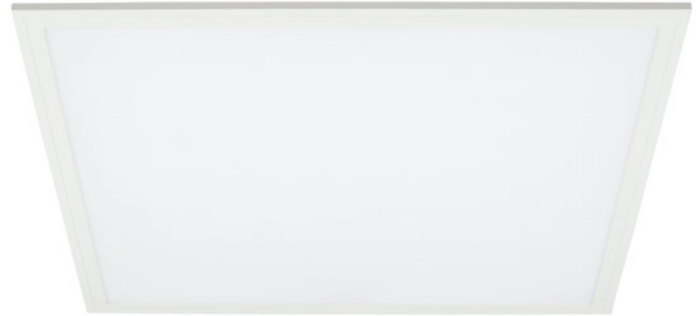
Our Selectable Output Series features field-selectable wattage and CCT, enabling a wide range of output options from a single fixture. Each fixture includes up to 5 unique lumen levels and 3 options for color temperature (3500/4000/5000). Also, each wattage is individually qualified with the DLC to ensure the best rebates based on the actual energy usage.

Installation is simple and quick; this LED panel upgrade fits seamlessly into all standard 2' x 4', 2' x 2' or 1' x 4' grid ceiling layouts. It can also be recessed into drywall ceiling applications, surface mounted or suspension mounted as alternatives.

The LED Light Panel delivers up to 125 lumens per watt (LPW) over the course of its 100,000-hour rated life. It ensures long-term energy savings over traditional fluorescent bulbs and ballasts, as well as eliminates routine maintenance, making it perfect for updating existing grid layouts or implementing in new construction. Furthermore, it's backed by an industry-leading 10-year warranty, guaranteeing peace of mind for the life of your fixture.

FEATURES

- Selectable wattage (up to 5 settings)
- Selectable CCT (3500K, 4000K, 5000K)
- DLC Premium (up to 125 LPW)
- Size options: 2x4, 2x2, 1x4
- Sealed enclosure (Bug/dust free)
- Anti-yellowing frosted diffuser
- ETL Damp location rating
- IC rated
- 0-10V Dimming
- 100,000-hour rated life
- 10-year warranty
- Compatible with Emergency Battery Backup
- Easy installation
- Grid, suspension, surface or recessed mounting



MARKETS

- Schools and universities
- Offices and municipal buildings
- Healthcare facilities and hospitals

MOUNTING

- Grid ceiling
- Suspension
- Surface Mount
- Recessed drywall

CERTIFICATIONS



SPECIFICATIONS

Average rated life: 100,000 hours (@L70)

Warranty: 10 years

Operating temp: -4°F to 104°F (-20°C to 40°C)

Surge protection: ANSI C82.77 compliant

Input voltage: 120-277V

Input frequency: 50/60Hz

Power factor: ≥0.95

CRI: 80

Diffuser type: Polycarbonate frosted

Dimming: 0-10VDC ANSI C137.x compliant

Minimum dimming: 0% of rated lumen LED drive current

Location rating: Damp

ETL listed: Yes

RoHS compliant: Yes

DLC rating: Premium

IC rated: Yes

IP rating: 20

MOUNTING

Standard: T-bar grid (drop ceilings)

Wiring access: 1/2" trade size knockouts

ACCESSORIES

Emergency Battery Backup

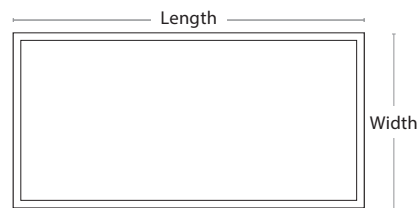
Surface Mounting Kit

Drywall Mounting Kit

Suspension Mounting Kit

DIMENSIONS

SIZE	LENGTH	WIDTH	HEIGHT
2' x 4'	47.75"	23.75"	1.75"
2' x 2'	23.75"	23.75"	1.75"
1' x 4'	47.75"	11.9"	1.75"

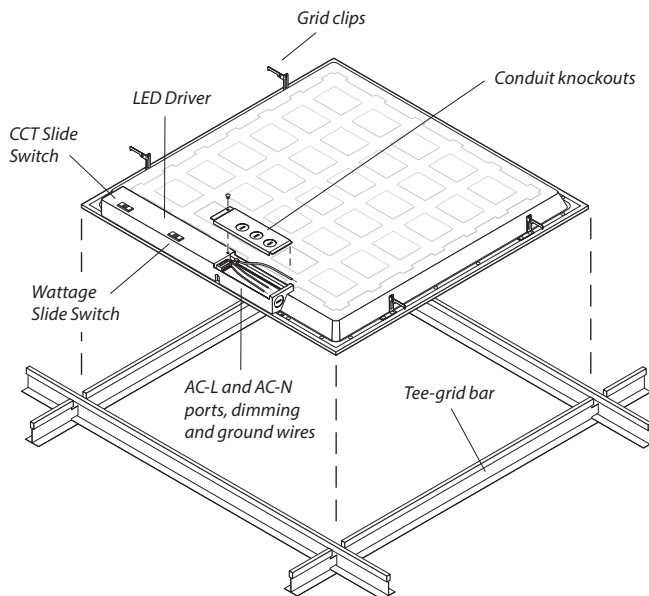


Panel (2' x 4' shown here)

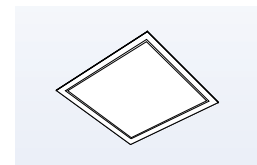


PRODUCT OVERVIEW AND INSTALLATION

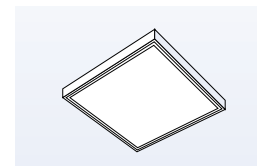
STANDARD GRID CEILING MOUNTING



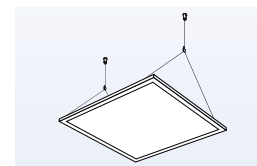
ALTERNATIVE MOUNTING OPTIONS



Recessed drywall mounted



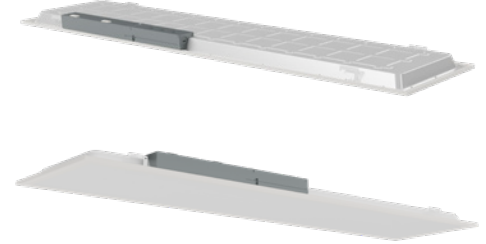
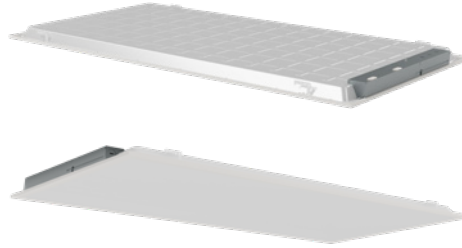
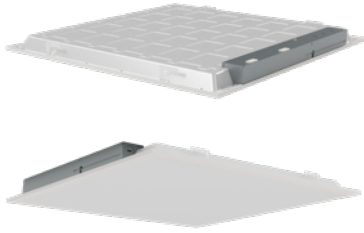
Surface mounted



Suspension mounted

ORDERING INFORMATION

Listed below are the included wattage settings and lumens for each model number.



2' X 2'

ROOT MODEL #	DESCRIPTION		
PT2	2X2 LED Light Panel		
EXT. MODEL #	WATTAGE	CCT	LUMENS
PT23518	18	3500	2,250
PT23520	20	3500	2,500
PT23525	25	3500	3,125
PT23530	30	3500	3,750
PT23536	36	3500	4,500
PT24018	18	4000	2,250
P24020	20	4000	2,500
PT24025	25	4000	3,125
PT24030	30	4000	3,750
PT2	36	4000	4,500
PT25018	18	5000	2,250
PT25020	20	5000	2,500
PT25025	25	5000	3,125
PT25030	30	5000	3,750
PT25036	36	5000	4,500

2' X 4'

ROOT MODEL #	DESCRIPTION		
PT4	2X4 LED Light Panel		
EXT. MODEL #	WATTAGE	CCT	LUMENS
PT43525	25	3500	3,125
PT43530	30	3500	3,750
PT43540	40	3500	5,000
PT43545	45	3500	5,625
PT43550	50	3500	6,250
PT44025	25	4000	3,125
PT44030	30	4000	3,750
PT44040	40	4000	5,000
PT44045	45	4000	5,625
PT4	50	4000	6,250
PT45025	25	5000	3,125
PT45030	30	5000	3,750
PT45040	40	5000	5,000
PT45045	45	5000	5,625
PT45050	50	5000	6,250

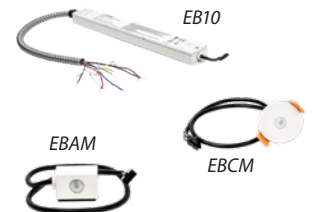
1' X 4'

ROOT MODEL #	DESCRIPTION		
PT1	1X4 LED Light Panel		
EXT. MODEL #	WATTAGE	CCT	LUMENS
PT13518	18	3500	2,250
PT13520	20	3500	2,500
PT13525	25	3500	3,125
PT13530	30	3500	3,750
PT14018	18	4000	2,250
PT14020	20	4000	2,500
PT14025	25	4000	3,125
PT1	30	4000	3,750
PT15018	18	5000	2,250
PT15020	20	5000	2,500
PT15025	25	5000	3,125
PT15030	30	5000	3,750

Each extended model # is individually listed with DLC. The highest wattage is listed under the root model # with 4000K CCT.

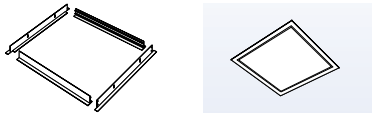
EMERGENCY BATTERY BACKUP

MODEL #	DESCRIPTION	USAGE
EB10	10W Emergency Battery Backup	Supplies battery backup to an individual fixture for up to 90 minutes. <u>Must be ordered with EBCM or EBAM indicator module.</u>
EBCM	Ceiling-mounted Indicator Module	In grid ceiling applications, this unit connects to the EB10 and is recess mounted in an adjacent panel where it displays the unit's current status of operation.
EBAM	Adhesive-mounted Indicator Module	In drywall/open ceiling applications, this unit connects to the EB10 and is mounted via adhesive, where it displays the unit's current status of operation.

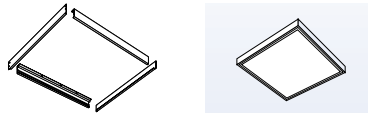


ORDERING INFORMATION

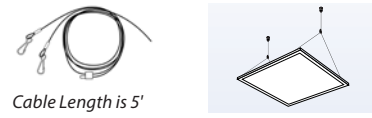
DRYWALL MOUNT KIT



SURFACE MOUNT KIT



SUSPENSION MOUNT KIT



DRYWALL MOUNT KIT

MODEL #	DESCRIPTION	USAGE	OUTSIDE DIMENSIONS
FPAM224	2x4 Drywall Mount Kit	Recess mount 2x4 Panels in ceiling surfaces	49.44" x 25.46" x 1.65"
FPAM222	2x2 Drywall Mount Kit	Recess mount 2x2 Panels in ceiling surfaces	25.46" x 25.46" x 1.65"
FPAM221	1x4 Drywall Mount Kit	Recess mount 1x4 Panels in ceiling surfaces	49.44" x 13.57" x 1.65"

SURFACE MOUNT KIT

MODEL #	DESCRIPTION	USAGE	OUTSIDE DIMENSIONS
PTAM204	2x4 Surface Mount Kit	Surface mount 2x4 Panels to ceiling surfaces	47.85" x 23.94" x 3.1875"
PTAM202	2x2 Surface Mount Kit	Surface mount 2x2 Panels to ceiling surfaces	24.07" x 23.94" x 3.1875"
PTAM301	1x4 Surface Mount Kit	Surface mount 1x4 Panels to ceiling surfaces	47.85" x 11.97" x 3.1875"

SUSPENSION MOUNT KIT

MODEL #	DESCRIPTION	USAGE	WEIGHT RATING	MAX DISTANCE FROM CEILING
PTAM214	2x4 Suspension Mount Kit	Suspend 2x4 Panels from ceiling	25 lbs	4.45'
PTAM212	2X2 Suspension Mount Kit	Suspend 2x2 Panels from ceiling	25 lbs	4.45'
PTAM211	1X4 Suspension Mount Kit	Suspend 1x4 Panels from ceiling	25 lbs	4.45'

HAVE QUESTIONS?

Our Customer Service team can help. Call us at 800-860-3392 or send an email to customerservice@litetronics.com