



INSULATED LEATHER DRIVER



Goatskin



Abrasion



Cut



Insulated



Puncture

GL3006CKF

HPPE + Fleece | Grain | Goatskin

ANSI/ISEA 105



ANSI/ISEA 105 – CUT A5 | ABRASION 4 | PUNCTURE 4

Premium grain goatskin provides abrasion and puncture resistance // 360° HPPE cut-resistant liner provides comfort and dexterity // Fleece interior liner keeps hands warm // Sustained warmth in low temperatures // Classic ergonomic keystone thumb creates great mobility // Gunn cut design provides comfortable wear // Elastic back for secure fit // Slip-on cuff for easy on/off

Suggested Applications

Agriculture // Transportation // Masonry // Construction // Mining // Oil & Gas

Glove Breakdown

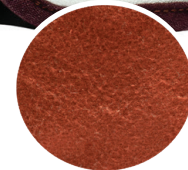
Type: Leather Driver
Material: Grain Goatskin
Grade: Premium
Pattern: Gunn
Thumb: Keystone
Outer Liner: 360° HPPE
Inner Liner: Fleece
Cuff: Slip-On

⚠ WARNING: Cancer and Reproductive Harm – P65Warnings.ca.gov

Product markings may vary // Updated as of 07.25



Insulated fleece liner



Packaging

	Inner Polybag	Outer Polybag	Case	Made in
GL3006CKF	1 Pair	6 Pair	60 Pair	Pakistan

Glove Sizing

Small 7	Medium 8	Large 9	X-Large 10	2X-Large 11
------------	-------------	------------	---------------	----------------

All sizes comply with EN ISO 21420 for comfort, fit and dexterity. Only wear the correct size for your hand. Gloves that are too loose or too tight will restrict movement and will not provide the optimal level of protection.