



Corrugated Switchboard Runner #950

DRY AREAS | NON - CONDUCTIVE ★★★★★



Corrugated Switchboard Runner V-groove non-conductive runner insulates worker to prevent shock.

HIGH VOLTAGE APPLICATIONS

- computer workstations
- fuse boxes
- control panels
- switchboards

FEATURES

- Electrical Properties - Dielectric Test Voltage 30,000 VAC Proof Tested over entire surface at 20,000 VAC recommended maximum use voltage 17,000 VAC issued product conforms to ASTM D178-81 and ANSI J6.7 Type II, Class2
- Superior form and function for heavy duty applications, including floor protection, slip resistance and traction, comfort and more.

STANDARD ROLL SIZE

3' x 75'

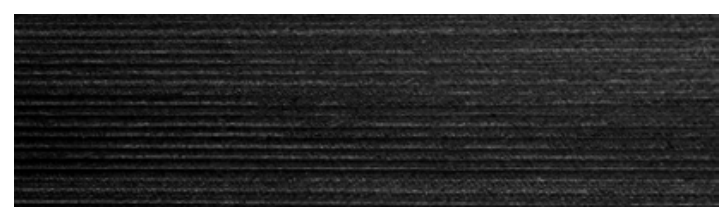
Custom cut length up to 75'

Prop 65 WARNING: 65003



MATERIAL
Vinyl
SURFACE
V-groove
WEIGHT
.64 lbs. per sq. ft.
FLAMMABILITY
Meets ASTM-D-1962
THICKNESS
1/4"

WARRANTY Total Confidence



Corrugated top surface
1/4" thick



Working Hard for the Hard Working

WE OFFER A 48 HOUR SHIPPING GUARANTEE FOR IN-STOCK ORDERS.
CrownMats.com 1-800-MAT-LINE 2100 Commerce Drive, Fremont, Ohio 43420