

SAFETY PROJECTORS

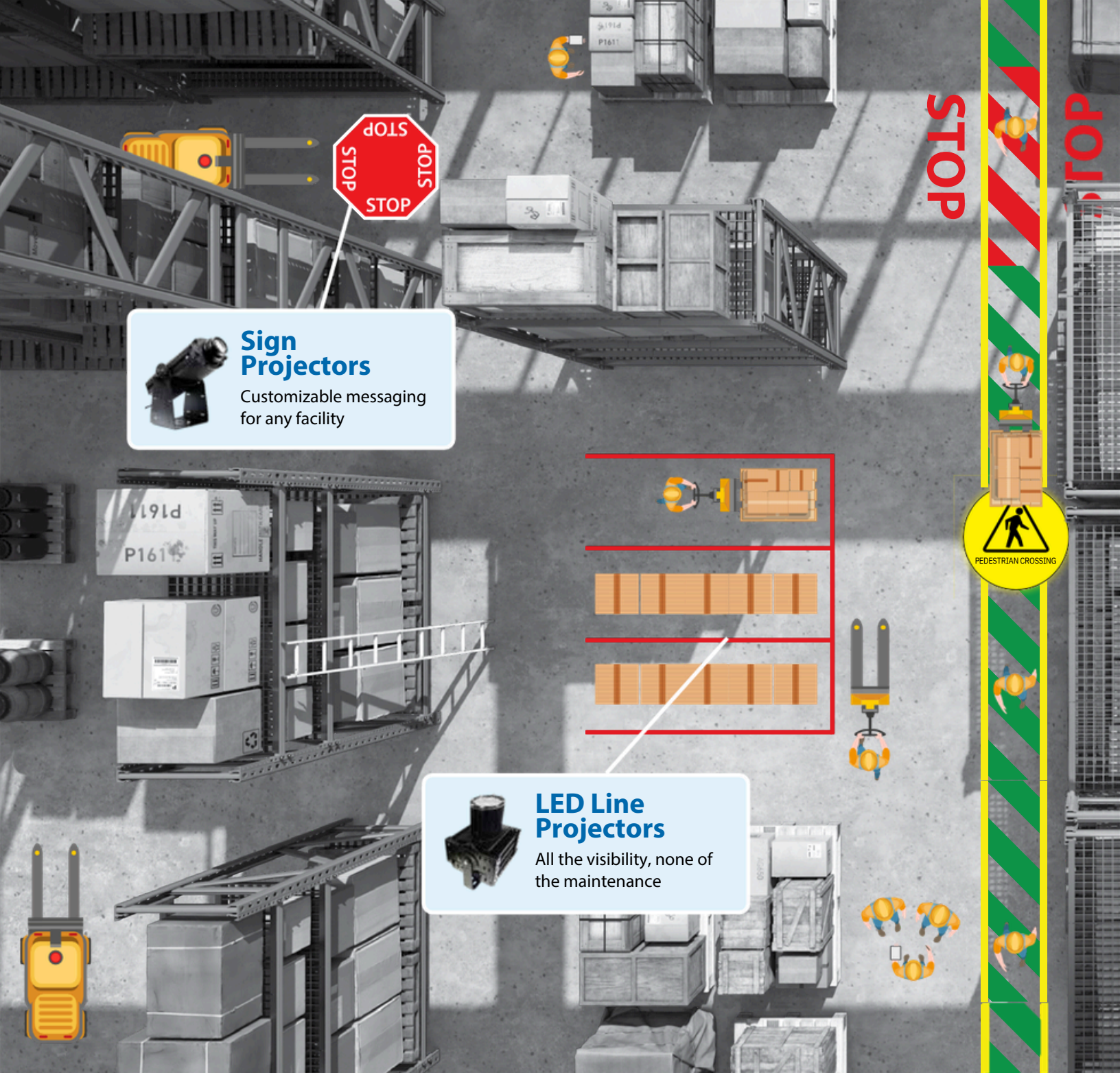
Ditch the Tape
Skip the Paint
Illuminate



THE SAFETY SOURCE LLC

The Compliance Experts
Best in Class Customer Service
Trusted Safety Solutions That Fit

www.safetysourcecellc.com
sales@safetysourcecellc.com
866.688.7233

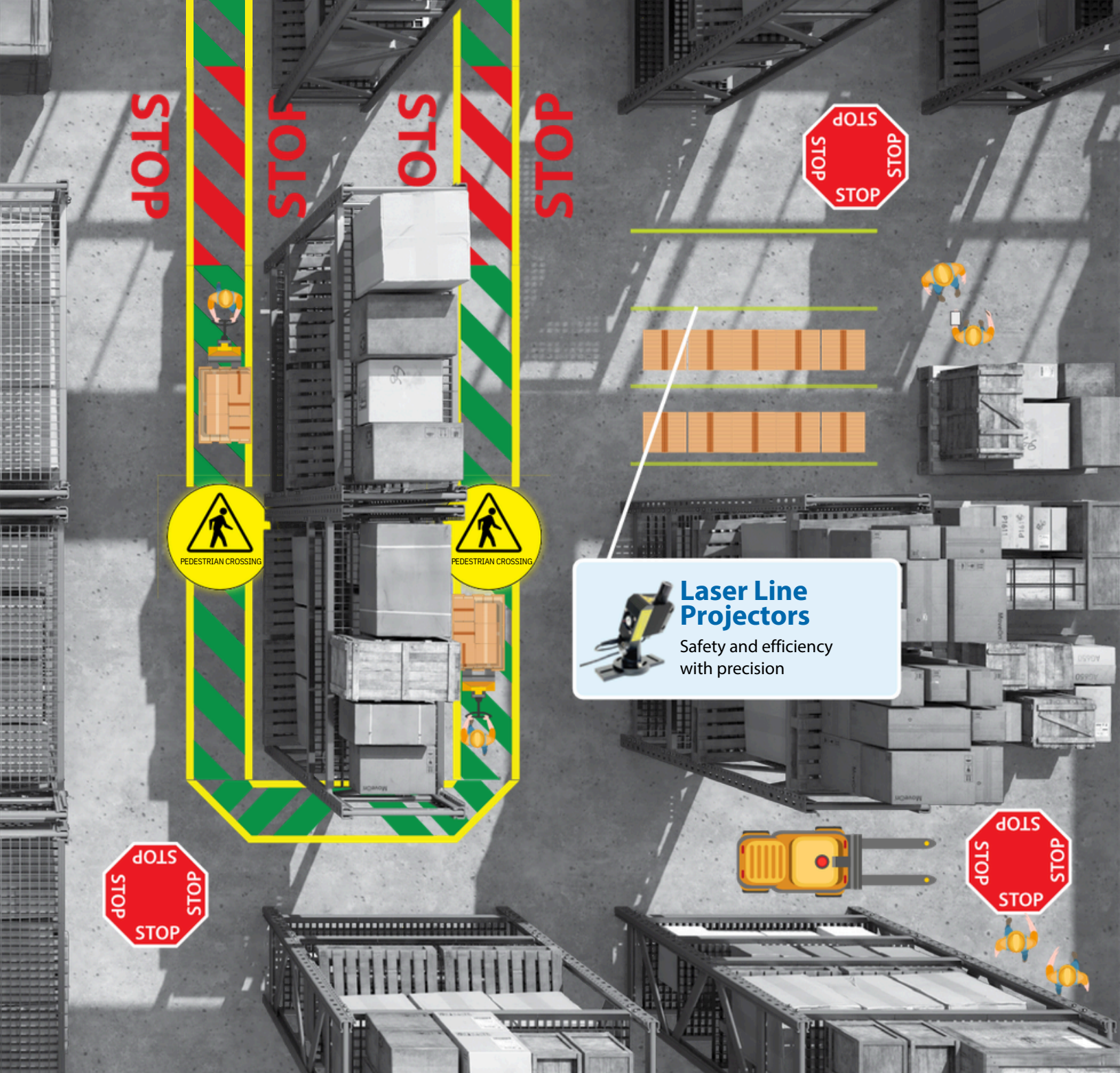


Sign Projectors
 Customizable messaging for any facility

LED Line Projectors
 All the visibility, none of the maintenance

Durable, Scalable & Sustainable

Safety projectors illuminate safety messages and aisle markings onto floors or walls through stock or customizable lenses. These projectors can be mounted in facilities to define designated areas, enhance hazard awareness, and support regulatory compliance. Unlike traditional floor markings that wear and tear from facility traffic, safety projectors are a long-lasting, maintenance-free solution.



Laser Line Projectors
 Safety and efficiency with precision

5 Year Projector Warranty
 We ensure your safety projectors deliver reliable performance and protection with our industry-leading warranty.
Contact us today to learn more.

CUSTOMIZE IT!
Need a unique message projected?
 Contact us today!



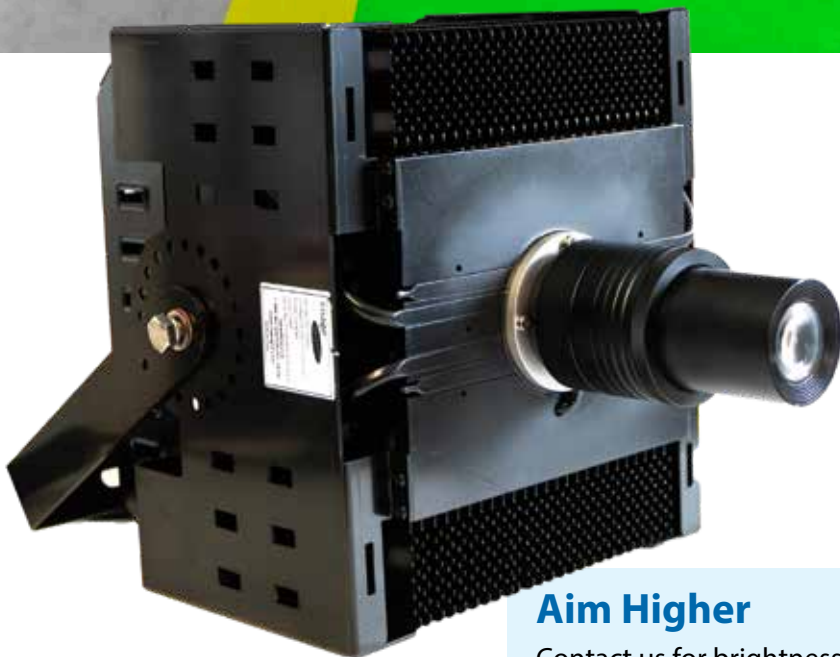
Aim Higher

Contact us for brightness options up to 600W for mounting at any height.

Sign Projectors

Attention grabbing messages, impervious to wear and tear of facility traffic

- 100, 200 and 300-Watt bulb options
- 15ft - 45ft Installation height range (100W option limited to 35ft)
- 4ft - 10ft Radius dimension range
- -40°F to 128°F Temperature range
- Up to 40,000 Hour bulb lifespan
- 110 - 277VAC
- IP65 Rated
- Motion sensor and toggle switch, see page 12
- Mounting hardware included



Aim Higher

Contact us for brightness options up to 600W for mounting at any height.

Heavy Duty Sign Projector

With stands dusty and higher temp environments

- 100, 200 and 300-Watt bulb options
- 15ft - 45ft Installation height range (100W option limited to 35ft)
- 4ft - 10ft Radius dimension range
- -40°F to 140°F Temperature range
- Up to 40,000 Hour bulb lifespan
- 110 - 277VAC
- IP65 Rated
- Motion sensor and toggle switch, see page 12
- Mounting hardware included



Customize It! GOBO Lenses

Virtually indestructible safety messages on any surface

Customized projector lenses elevate awareness while keeping everyone protected in unique environments. From personalized messages, to eye-catching designs featuring original imagery and logos, these products ensure clear communication and maximum visibility while reinforcing branding and culture in any facility. Make an impression and prioritize safety with The Safety Source.

- No Set-Up Fees
- No Minimums
- Unlimited Design Options
- Translations Available
- Proofs Upon Request



Installation Guidance

See below for available projected image sizes based on the mounting height. Need a specific projected image size? We're here to help, reach out today!*

Mounting Height	Projection Image Size						
	2-4'	4-6'	6-8'	8-10'	10-12'	12-14'	14-17'
<10'	✓	✓	✓				
10-15'	✓	✓	✓	✓			
15-20'	✓	✓	✓	✓	✓	✓	
20-25'		✓	✓	✓	✓	✓	
25-30'		✓	✓	✓	✓	✓	
30-35'		✓	✓	✓	✓	✓	✓
35'-40'			✓	✓	✓	✓	✓

*Installation height required at time of quote/order. Height range is 20-ft to 40-ft



Consistent level of brightness regardless of mounting height

40ft Height

30ft Height

20ft Height





LED Line Projectors

Ditch the Tape, Skip the Paint

- 100 & 200-Watt bulbs available
- 10ft - 35ft Installation height range
- 10ft – 70ft Line length range
- 2" – 5" Line width range (dependent on installation height)
- -4°F to 104°F Temperature range
- 17 lbs
- 67" long power cord
- 40,000 Hour bulb lifespan
- 110VAC
- IP65 Rated
- Motion sensor capable, see page 12
- Mounting hardware included

Available in 6 Colors



Green



Red



Yellow



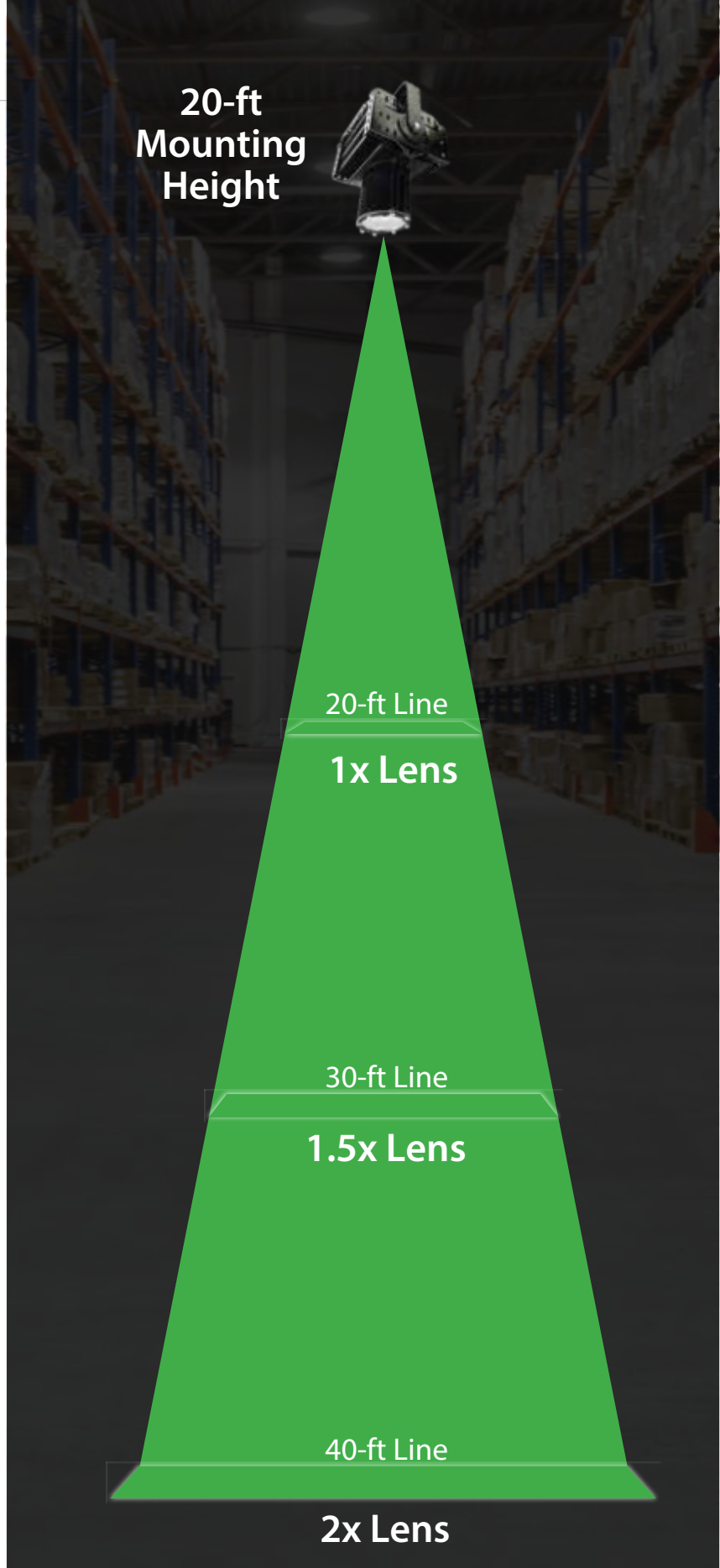
Orange

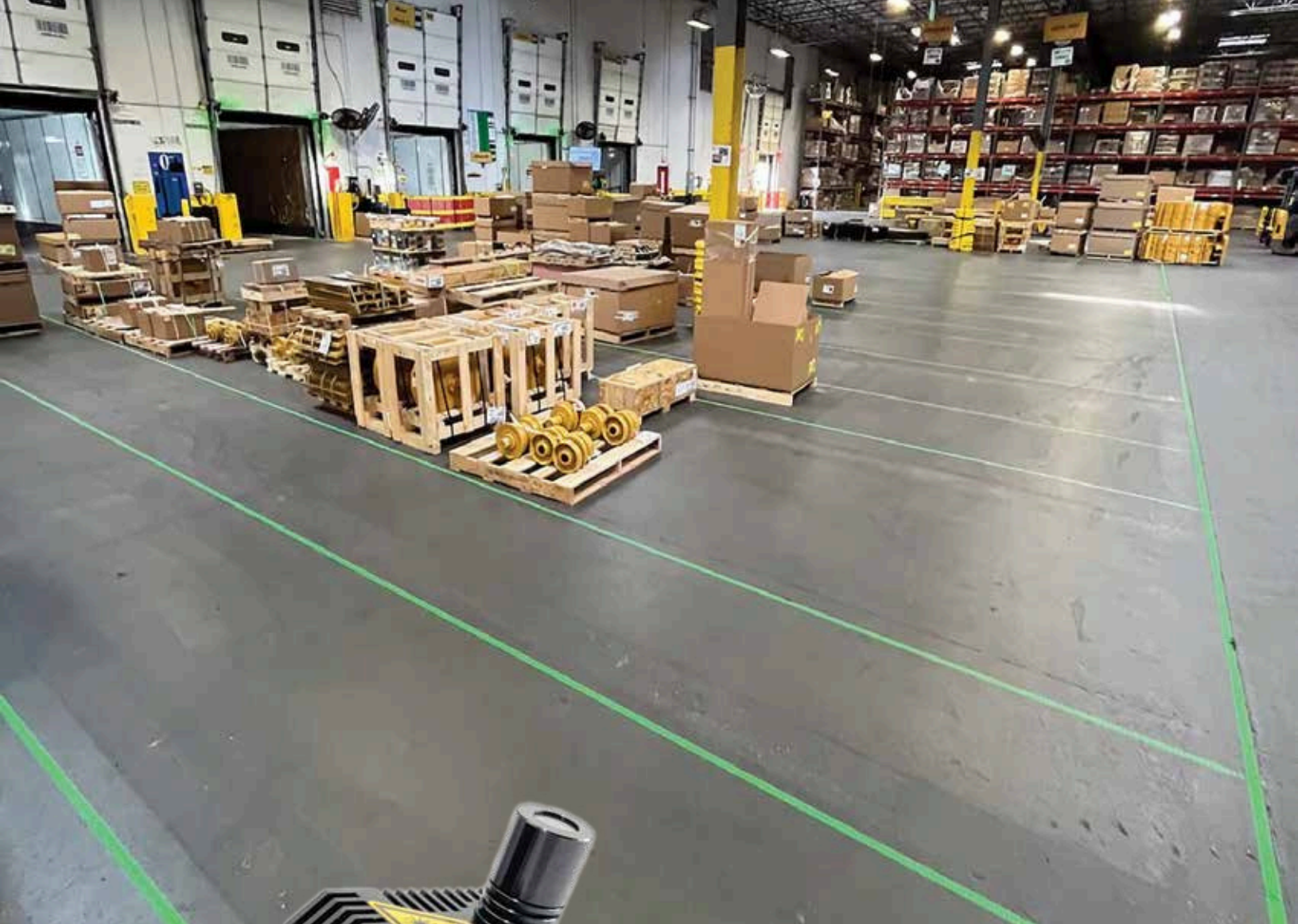


White



Blue





Laser Line Projector

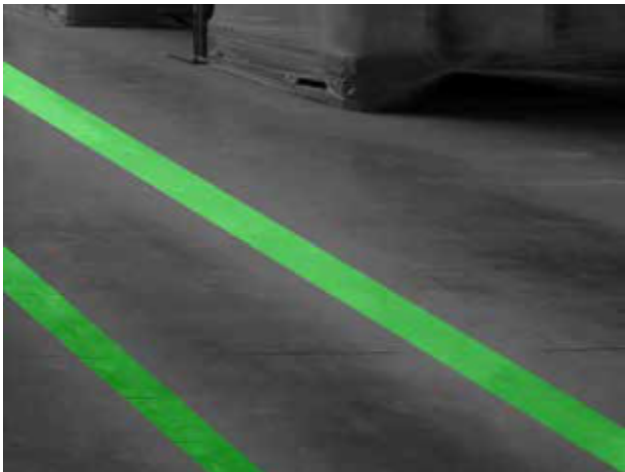
Safety and organization with precision

- Laser provides superior contrast against any surface
- Highest installation range
- 20ft - 50ft Installation height range
- 15ft - 140ft Line length range
- .5" - 4" Line width (dependent on installation height)
- 6.5ft Power cord
- 5lbs • 5°F to 113°F Temperature range
- 30,000 Hour illumination lifespan
- 110 - 230VAC, power draw < 10W per unit
- Motion sensor capable, see page 12
- Mounting hardware included

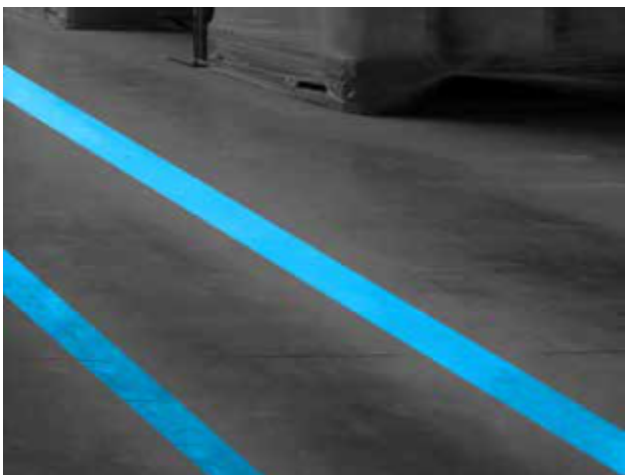
Available in 3 Colors



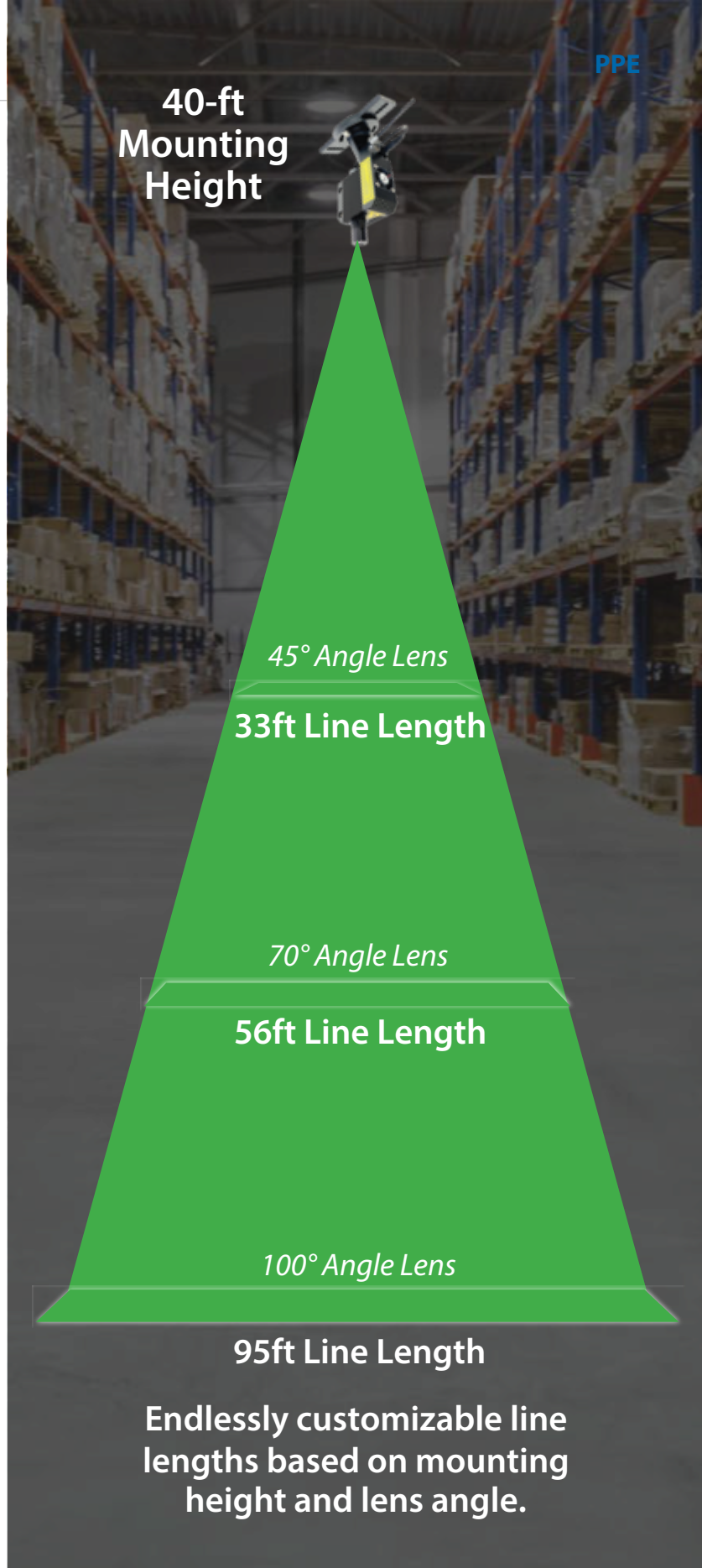
Red



Green



Blue



Projector Accessories



Motion Sensor

- Detects nearby movement for triggering projector
- Compatible with entire projector offering
- Prevents over exposure & extends lifespan
- Easy installation: Connect projector, position sensor
- Adjustable sensitivity and projection duration

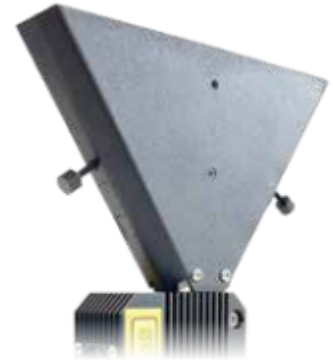
*Sold separately



Door Toggle Switch

- Ensure hands-free safety messaging
- Instantly activate or deactivate projectors as door opens or closes
- Seamless toggle between multiple projections
- Long-lasting reliability in any setup
- Minimal setup

*Sold separately



Laser Line Limiter

- Precise Line Control
- Adjust the length of the projected line for pinpoint accuracy in every application
- Easily modify the projection length with a user-friendly design
- No need for complex setups.

*Sold separately

ILLUMINATING the Path to Safety

The Safety Source is your safety projection expert

We offer expert blue printing and layout assistance with dedicated support for seamless integration, ensuring optimal performance in any environment. Need help mounting your projectors? Ask us about turnkey installation support.

Contact Us Today to Learn More



THE SAFETY SOURCE LLC

The Compliance Experts
Best in Class Customer Service
Trusted Safety Solutions That Fit

www.safetysourcecellc.com
sales@safetysourcecellc.com
866.688.7233