

Project Name:	Part Number:	Type:
---------------	--------------	-------

# LARGE AREA LIGHT - 270W & 375W

## OUTDOOR



407-478-3759  
www.ilp-inc.com

### FEATURES

- Bronze die-cast aluminum housing
- Custom and factory select colors available (Contact factory for pricing)
- Type II, III, IV, & VS optics available
- Tool-less hinged drop down driver access
- Universal Pole Mounting Bracket available (UPMB)
- Swappable driver cover
- IP66 Rated
- 3000K, 4000K, & 5000K color options
- 0-10V Dimmable Driver
- Dark Sky Compliant<sup>1,2</sup>
- 5 Year Warranty
- DesignLights Consortium® Premium Qualified Luminaire



<sup>1</sup>3000K is IDA Listed

<sup>2</sup>Must select UPMB, ARM6, or HTMA mounting options to qualify



### SUITABLE APPLICATIONS

- Parking Lots
- Car Dealerships
- Roadways
- Shopping Centers

LED SYSTEMS INFO		T2	T3	T4	T5S		T2	T3	T4	T5S
Calculated L <sub>70</sub> (TM-21)	<b>270W</b>	>100K	>100K	>100K	>100K	<b>375W</b>	>100K	>100K	>100K	>100K
Calculated L <sub>90</sub>		49K	49K	49K	49K		50K	50K	50K	50K
Delivered Lumens		40,931 lm	40,700 lm	38,833 lm	40,533 lm		52,279 lm	52,079 lm	50,677 lm	51,865 lm
Total Input Watts		271W	271W	270W	271W		382W	383W	383W	383W
Luminaire Efficacy Rating (LER)		151 lm/W	150 lm/W	144 lm/W	150 lm/W		137 lm/W	136 lm/W	132 lm/W	136 lm/W
Correlated Color Temperature (CCT)		4000K	4000K	4000K	4000K		4000K	4000K	4000K	4000K
Color Rendering Index (CRI)		>70	>70	>70	>70		>70	>70	>70	>70
BUG Rating		B4-U0-G4	B4-U0-G4	B4-U0-G5	B5-U0-G5		B5-U0-G5	B4-U0-G5	B4-U0-G5	B5-U0-G4
Ambient Temperature Range		-40°F- 128°F	-40°F- 128°F	-40°F- 128°F	-40°F- 128°F		-40°F- 111°F	-40°F- 111°F	-40°F- 111°F	-40°F- 111°F
Universal Driver		120-277 V	120-277 V	120-277 V	120-277 V		120-277 V	120-277 V	120-277 V	120-277 V

LED System data above based on AL-270W-U-40-T2, AL-270W-U-40-T3, AL-270W-U-40-T4, AL-270W-U-40-T5S, AL-375W-U-40-T2, AL-375W-U-40-T3, AL-375W-U-40-T4 & AL-375W-U-40-T5S  
LED Lumen maintenance estimates based on TM-21 projections for the light source at 25°C ambient.

### ORDERING GUIDE:

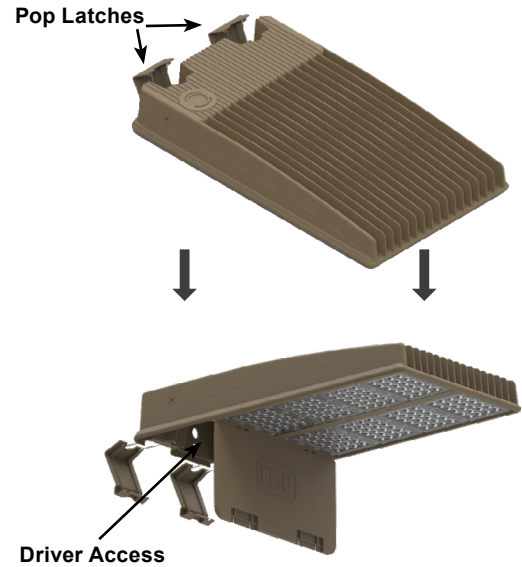
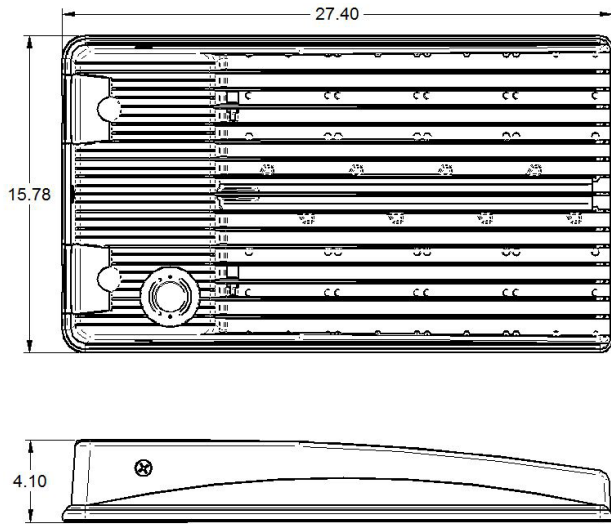
Series	Watts	Driver	Color	Optics	Options	
<b>AL LG Area Light</b>	<b>270W</b>	<b>U</b> 120-277V Driver	<b>50</b>	<b>T2</b>	<b>ARM6-S</b>	6" Straight Arm Adaptor for Square Pole (Standard)
	<b>375W</b>	<b>HV</b> 347-480V Driver	<b>40</b>	<b>T3</b>	<b>ARM6-Rx</b>	6" Straight Arm Adaptor for Round Pole (x = diameter)
			<b>30</b>	<b>T4</b>	<b>UPMB</b>	Universal Pole Mounting Bracket
				<b>T5S</b>	<b>UPMB/R</b>	Universal Pole Mounting Bracket w/ Round Pole Adapter 4"-5"
					<b>LARGE-WMB</b>	Large Wall Mount Bracket
				<b>AL-SLPF</b>	Adjustable Slip Fitter	
				<b>HTMA</b>	Horizontal Tenon Mount Adaptor	
				<b>HSS*</b>	House Side Shield	
				<b>GS</b>	Glare Shield	
				<b>SP1</b>	10kA Max Univolt Surge Protector	
				<b>SP2</b>	22kA Max Univolt Surge Protector	
				<b>SP480V2</b>	20kA MAX 480V Surge Protector	
				<b>TLPC</b>	Univ. twist lock photocell factory installed receptacle w/ field installed photocell	
				<b>7PIN/PC/R</b>	7 Pin Photocell Factory Installed Receptacle	
				<b>FUSE/SXXX</b>	Single-line Voltage Fuse (120, 277, 347)	
				<b>FUSE/DXXX</b>	Dual-line Voltage Fuse (208, 240, 480)	
				<b>WLOS</b>	Wet Location Rated Occupancy Sensor	
				<b>USBD</b>	User Select Bi-Level Din w/ Occ. Sensor	
				<b>BDxx</b>	Preset Bi-Level Dim Sensor (xx=% eg. 20, 30)	
				<b>BDxxPC</b>	Preset Bi-Level Dim Sensor w/ Photocell (xx=% eg. 20, 30)	
				<b>FSIR/100</b>	Remote Configuration Tool for WLOS & USBD Control Options	
				<b>SD480V</b>	480V Step Down Transformer	
				<b>SD347V</b>	347V Step Down Transformer	

\* Due to the optical pattern of the T5S optic the HSS is not applicable

# LARGE AREA LIGHT - 270W & 375W

OUTDOOR

TOOL-LESS DRIVER ACCESS



## MOUNTING OPTIONS

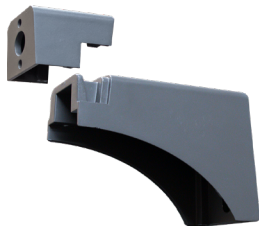
- **UPMB** - Universal Pole Mounting Bracket
- **UPMB/R** - Universal Pole Mounting Bracket
- **WMB** - Wall Mount Bracket
- **AL-SLPF** - Adjustable Slip Fitter
- **HTMA** - Horizontal Tenon Mount Adaptor
- **ARM6-S** - 6" Straight Arm Adaptor For Square Pole
- **ARM6-Rx** - 6" Straight Arm Adaptor For Round Pole (x = Ø)

EPA RATINGS	ARM6-S	UPMB	HTMA	AL-SLPF
AL-270W & 375W	1.03 ft <sup>2</sup>	1.17 ft <sup>2</sup>	0.98 ft <sup>2</sup>	1.10 ft <sup>2</sup>

### WEIGHT

40.00 LB

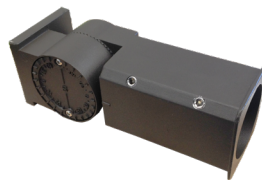
\* EPA Ratings listed assume fixture is mounted horizontally. For adjustable mounting options, EPA will vary with selected angle.



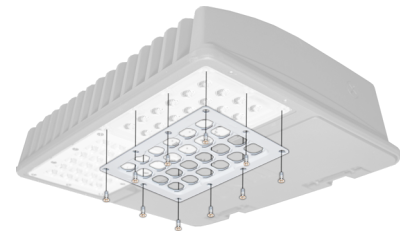
UPMB



WMB



AL-SLPF



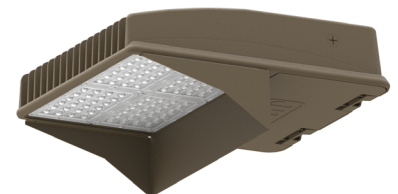
HSS  
(House Side Shield)



HTMA



ARM6-S  
(Available for Square or Round Pole)

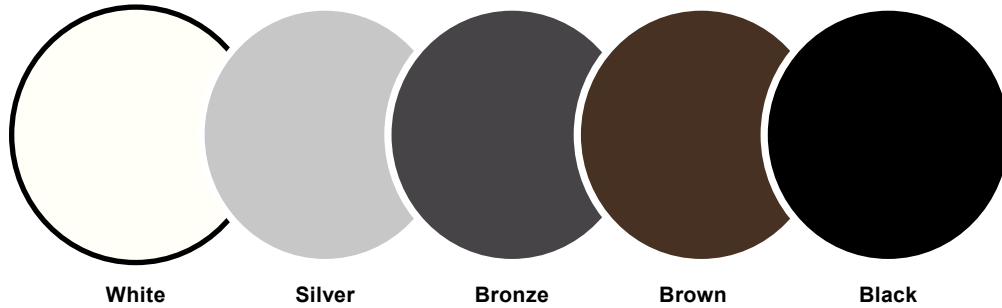


GS  
(Glare Shield)

# **LARGE AREA LIGHT - 270W & 375W**

OUTDOOR

## **FACTORY SELECT COLOR GUIDE**



<b>COLOR NAME AND DESCRIPTION</b>	<b>SHEEN</b>	<b>PRODUCT</b>	<b>VENDOR</b>	<b>PRICING</b>
WHT - ILP White	SEMI GLOSS	POLANE T	SHERWIN-WILLIAMS	Contact Factory for Pricing
SLV - ILP Silver - Ultrasonic Chrome	GLOSS	POLANE T	SHERWIN-WILLIAMS	Contact Factory for Pricing
BRZ - ILP Bronze - std. & in stock	SEMI GLOSS	POLANE T	SHERWIN-WILLIAMS	Standard
BRN - ILP Brown	SEMI GLOSS	POLANE T	SHERWIN-WILLIAMS	Contact Factory for Pricing
BLK - ILP Black	SEMI GLOSS	POLANE T	SHERWIN-WILLIAMS	Contact Factory for Pricing

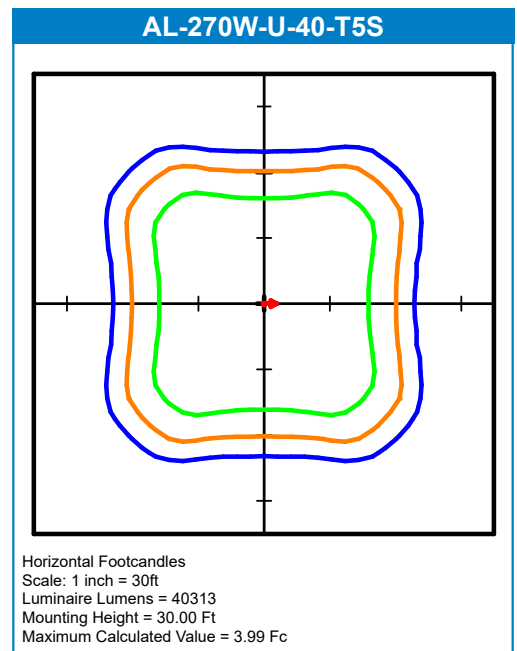
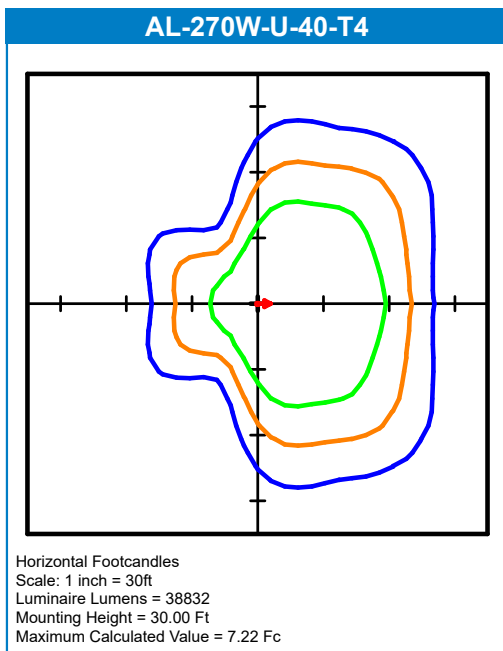
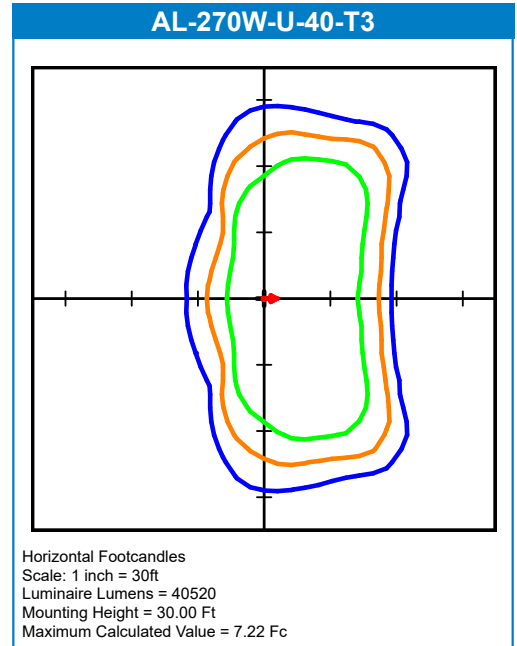
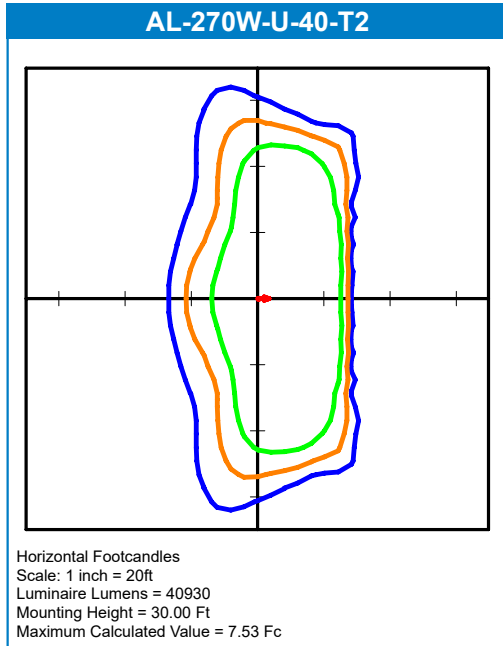
**COLORS SHOWN ABOVE ARE TO BE USED AS REFERENCE, NOT EXACT MATCH.  
PLEASE REQUEST PAINT CHIPS FOR EXACT MATCH.**

# LARGE AREA LIGHT - 270W & 375W

## OUTDOOR

### PHOTOMETRIC REPORTS

Photometric values based upon tests performed in compliance with LM-79. IES files can be downloaded at [www.ilp-inc.com](http://www.ilp-inc.com)  
Blue = 2 fc, Orange = 1 fc, & Green = .5 fc



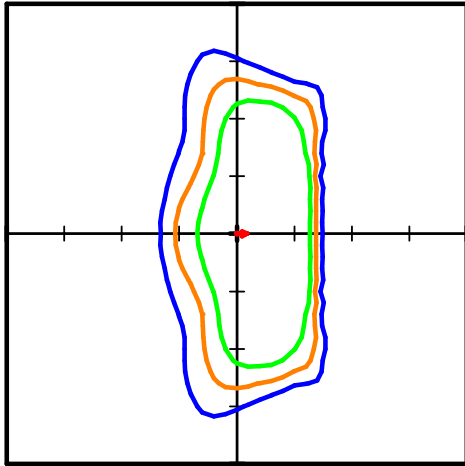
# LARGE AREA LIGHT - 270W & 375W

## OUTDOOR

### PHOTOMETRIC REPORTS

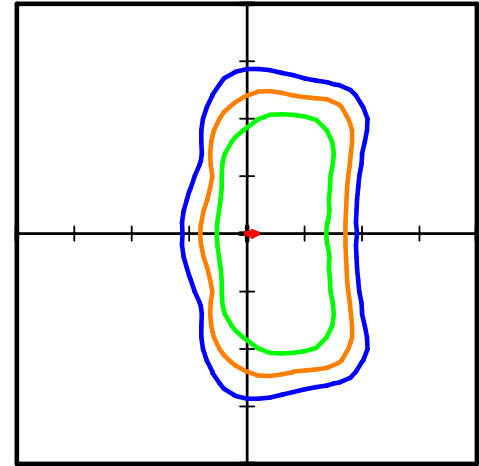
Photometric values based upon tests performed in compliance with LM-79. IES files can be downloaded at [www.ilp-inc.com](http://www.ilp-inc.com)  
Blue = .5 fc, Orange = 1 fc, & Green = 2 fc

AL-375W-U-40-T2



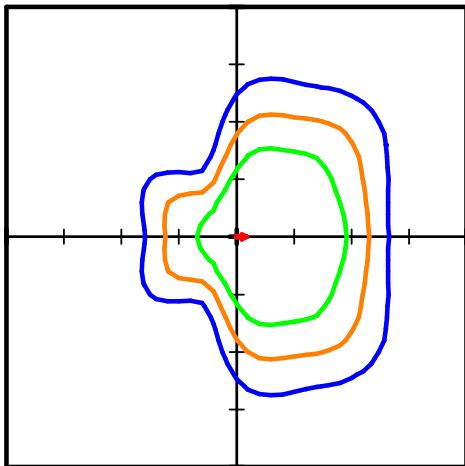
Horizontal Footcandles  
Scale: 1 inch = 40ft  
Luminaire Lumens = 52278  
Mounting Height = 35.00 Ft  
Maximum Calculated Value = 7.01 Fc

AL-375W-U-40-T3



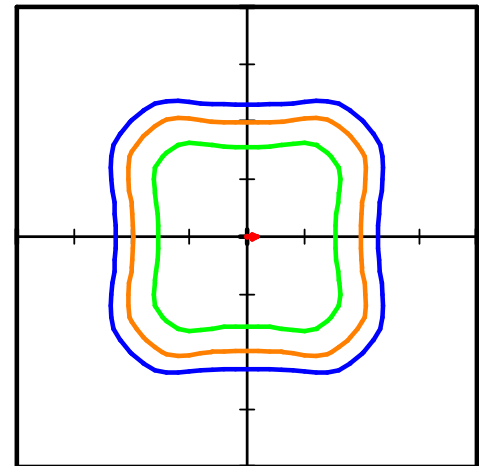
Horizontal Footcandles  
Scale: 1 inch = 40ft  
Luminaire Lumens = 52158  
Mounting Height = 35.00 Ft  
Maximum Calculated Value = 7.18 Fc

AL-375W-U-40-T4



Horizontal Footcandles  
Scale: 1 inch = 40ft  
Luminaire Lumens = 50676  
Mounting Height = 35.00 Ft  
Maximum Calculated Value = 6.91 Fc

AL-375W-U-40-T5S



Horizontal Footcandles  
Scale: 1 inch = 40ft  
Luminaire Lumens = 51861  
Mounting Height = 35.00 Ft  
Maximum Calculated Value = 3.78 Fc