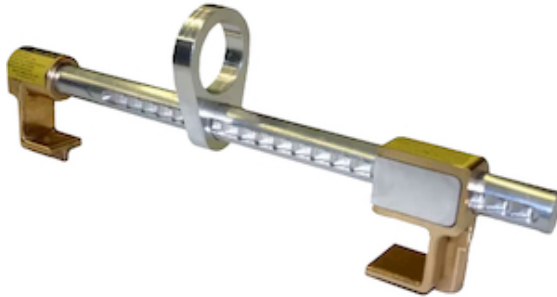




### Technical Data

Color	Silver
Sizes Available	OS
Packaging	Boxed
Packed	1/Case
Case Weight (lbs)	0.00
Country of Origin	United States
Anchor Type	Beam Clamp
Certifications	TAA Compliant



## Miller® Shadow® Adjustable and Fixed Beam Anchor

- Connect horizontally to a wide range of I and H beam flanges
- Adjustable to provide workers with an effortless range of motion
- Works horizontally or vertically, firmly gripping the beam or column to provide a temporary or permanent anchorage attachment
- Connects horizontally to beam flanges from 3 inches (76 mm) to 14 inches (356 mm) wide and up to 2-1/2 inches (64 mm) thick
- Quick-click set-up and adjustment that is easy to use and requires no loose pins
- High-strength bronze construction for longer service life
- Unique positive-locking engagement system for I-beam fall protection safety
- Compliant with industry safety standards, ensuring effective performance and reliable safety for users

## SKU Information

SKU	COLOR	SIZE	UPC	UPC (INNER)	UPC (CASE)
8816-14/	Silver	OS	612230119980		