

HD LED Linear Lightbar

Single-Sided



6.6W - 9.9W - 13.2W - 16.5W - 19.8W - 23.1W - 26.4W - 33W

Features

- PHILIP LED chip
- Great in illuminated light boxes, indoor & outdoor decoration, & architectural lighting
- Great replacement
- Driver sold separately
- Single & Double sided available

Recommended Use

- Light Boxes / Sign Boxes
- Menu Boards

Advantage

- Daisy Chain Installation
- Fits any single or double sided light box
- NO HOTSPOTS!!
- Lower maintenance costs
- Aluminum housing
- Up to 110 Lumens per watt
- Adjustable bracket available
- UL listed
- 5 year warranty

Input Voltage

- 100-277Vac

Qualification



HD LED Linear Lightbar

Single-Sided

Product

PRODUCT NAME	Linear Bar Single Sided							
CONSUMPTION	6.6W	9.9W	13.2W	16.5W	19.8W	23.1W	26.4	33W
SKU #/MODEL #	107573	107599	107615	107623	107631	108928	107656	108944
LUMEN	696lm	1044lm	1392lm	1740lm	2088lm	2436lm	2784lm	3480lm
SIZE	21.9"	33.9"	45.9"	57.9"	69.9"	81.9"	93.9"	117.9"

Specifications

COLOR TEMPERATURE	6500K
LUMEN EFFICACY	118.3LM/W
VIEWING ANGLE	160°
INPUT VOLTAGE	100-277Vac 50/60Hz
POWER FACTOR	>0.9
WATERPROOF RATING	IP66

Fixture Specifications

LED BRAND	Philips
LED TYPE	COB
LED QTY	Varies base on size
HOUSING	Aluminum + Tempered Glass
HOUSING COLOR	Metalic Silver

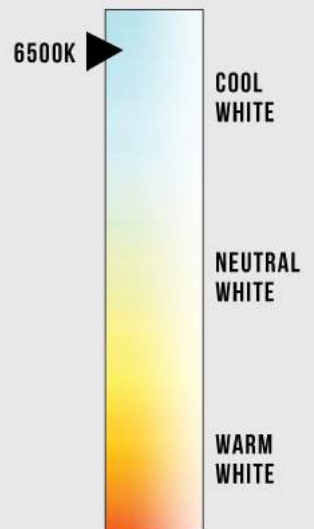
Others

OPERATING TEMPERATURE	APPLICATION	CRI	BEAM ANGLE	DIMMABLE
-4°F TO 104°F	Indoor / Outdoor	>80	160°	No

Warranty & Qualification

WARRANTY	UL LISTED	DLC
5-Year Limited	Yes	No

CORRELATED
COLOR TEMPERATURE
(CCT)



Due to continuous product improvement, information in this document is subject to change.

Revision Date: 05/29/2019

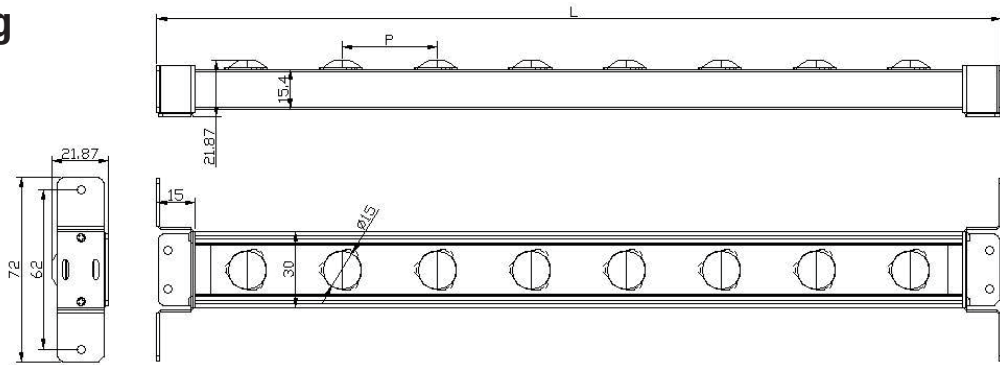
1939 Parker Ct Stone Mountain, GA 30087 | Phone: (866) 786-1117 | www.beyondledtechnology.com

 **BEYOND**[®]
LED TECHNOLOGY

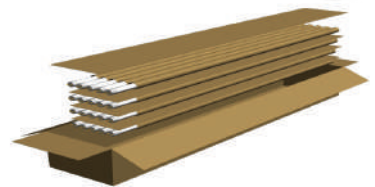
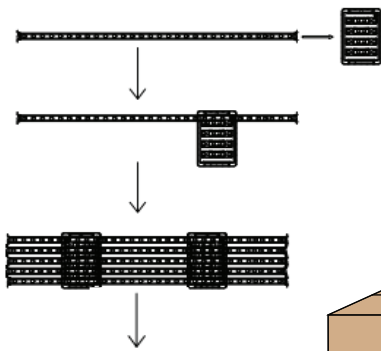
HD LED Linear Lightbar

Single-Sided

Drawing



SKU#	Gross Weight	Qty per Carton	Carton Size
107573	8.5	30	25.6" x 11.8" x 7.8"
107599	13	30	37.4" x 11.8" x 7.8"
107615	16.3	30	49.2" x 11.8" x 7.8"
107623	21.5	30	61" x 11.8" x 7.8"
107631	25.9	30	72.8" x 11.8" x 7.8"
108928	35.9	30	96.4" x 11.8" x 7.8"
107656			
108944			



Notice For User

- Please turn off power before install or change assembly parts.
- The input voltage and lamps should be matched, after connecting the power line, Please make sure the wiring section is insulated
- Licensed Electrician Installation ONLY.

Due to continuous product improvement, information in this document is subject to change.

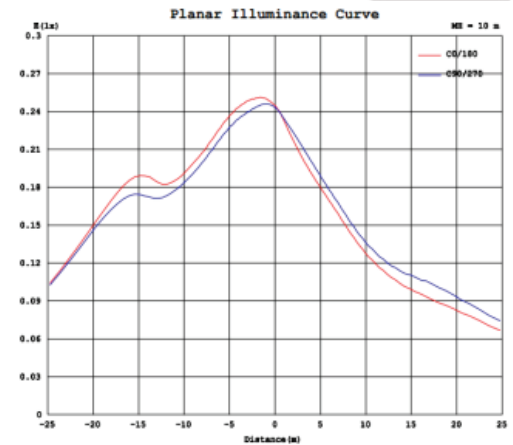
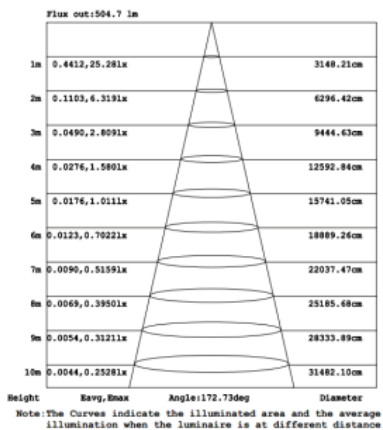
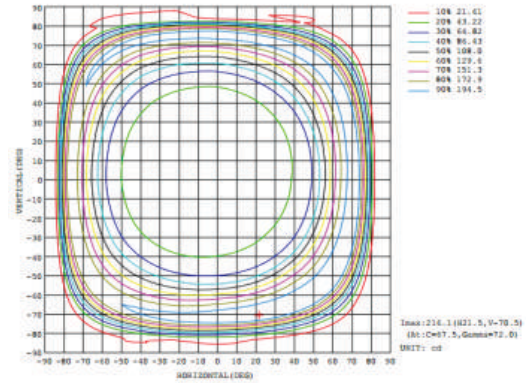
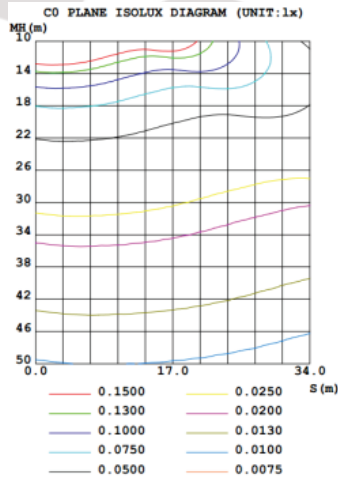
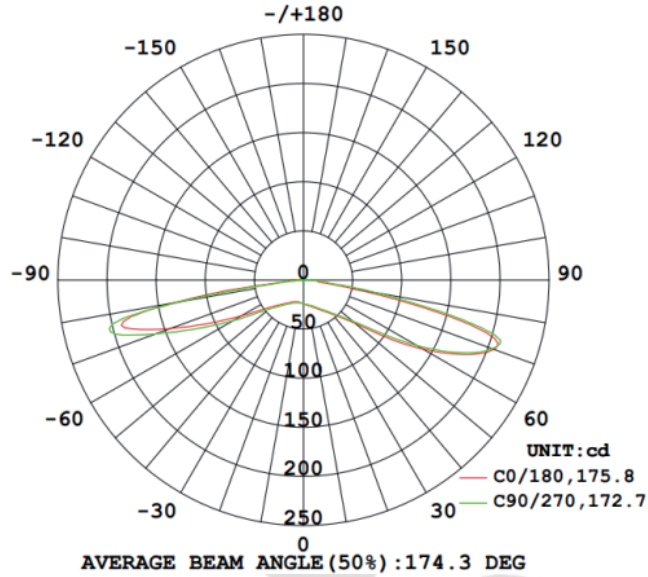
Revision Date: 05/29/2019

1939 Parker Ct Stone Mountain, GA 30087 | Phone: (866) 786-1117 | www.beyondledtechnology.com

HD LED Linear Lightbar

Single-Sided

Light Distribution Testing Parameters



Due to continuous product improvement, information in this document is subject to change.

Revision Date: 05/29/2019

1939 Parker Ct Stone Mountain, GA 30087 | Phone: (866) 786-1117 | www.beyondledtechnology.com